

PCM & PCM-T Alloy Steel

PTFE Lined Optional - Right & Left Hand Threads - Male

E X T R A S T R E N G T H

Inch Rod Ends

**PCM & PCM-T
Features**

BALL

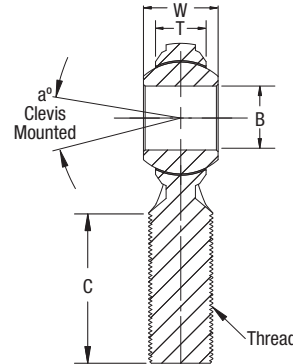
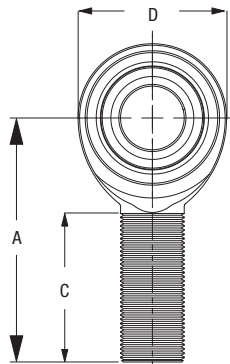
- 52100 Bearing Steel
- Heat Treated

- Hard Chrome Plated
- Precision Ground

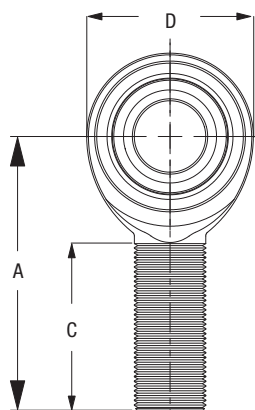
BODY

- Alloy Steel
- Heat Treated
- Metal-to-Metal
- Black Oxide Coated
- PTFE Lined (PCM-T)

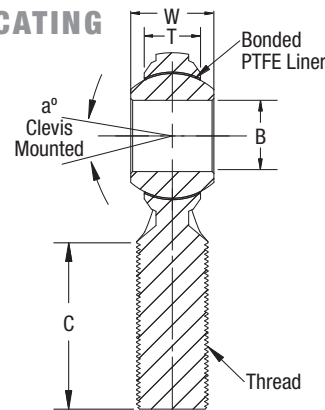
PART NUMBER		DIMENSIONS IN INCHES										
Right Hand	Left Hand	B + .0015 - .0005	W ± .005	T Ref.	A ± .015	D Ref.	Ball Dia. Ref.	C + .062 - .031	Thread UNF-3A	Misalign. Angle a°	Ult. Radial Static Load Lbs.	Approx. Brg. Wgt. Lbs.
PCMR6	PCML6	0.375	0.500	0.359	1.938	1.000	0.719	1.250	3/8-24	22	9500	0.15
PCMR8	PCML8	0.5000	0.625	0.453	2.438	1.312	0.937	1.500	1/2-20	20	17,000	0.24
PCMR8-10	PCML8-10	0.5000	0.625	0.453	2.625	1.500	0.937	1.625	5/8-18	20	19,300	0.30
PCMR10	PCML10	0.6250	0.750	0.484	2.625	1.500	1.125	1.625	5/8-18	26	18,000	0.36
PCMR10-12	PCML10-12	0.6250	0.750	0.484	2.875	1.750	1.125	1.750	3/4-16	26	27,000	0.48
PCMR12	PCML12	0.7500	0.875	0.593	2.875	1.750	1.312	1.750	3/4-16	24	25,000	0.57



PART NUMBER		DIMENSIONS IN INCHES										
Right Hand	Left Hand	B + .0015 - .0005	W ± .005	T Ref.	A ± .015	D ± .010	Ball Dia. Ref.	C + .062 - .031	Thread UNF-2B	Misalign. Angle a°	Ult. Radial Static Load Lbs.	Approx. Brg. Wgt. Lbs.
PCMR6T	PCML6T	0.375	0.500	0.359	1.938	1.000	0.719	1.250	3/8-24	22	7100	0.15
PCMR8T	PCML8T	0.5000	0.625	0.453	2.438	1.312	0.937	1.500	1/2-20	20	14,500	0.24
PCMR8-10T	PCML8-10T	0.5000	0.625	0.453	2.625	1.500	0.937	1.625	5/8-18	20	17,650	0.30
PCMR10T	PCML10T	0.6250	0.750	0.484	2.625	1.500	1.125	1.625	5/8-18	26	15,200	0.36
PCMR10-12T	PCML10-12T	0.6250	0.750	0.484	2.875	1.750	1.125	1.750	3/4-16	26	23,000	0.48
PCMR12T	PCML12T	0.7500	0.875	0.593	2.875	1.750	1.312	1.750	3/4-16	24	21,400	0.57



SELF-LUBRICATING



This series is designed as an economical, high load rod end bearing. It features a heat treated alloy steel body and an optional self-lubricating PTFE liner (PCM-T).

PCYM-T & PCYF-T Alloy Steel

PTFE Lined - Right & Left Hand Threads - Male & Female
H I G H M I S A L I G N M E N T

**Inch
 2-Piece
 Rod Ends**



PCYM-T & PCYF-T

Features

BALL

- 52100 Bearing Steel
- Heat Treated
- High Misalignment

- Hard Chrome Plated
- Precision Ground

BODY

- Alloy Steel
- PTFE Lined

- Heat Treated
- Black Oxide Coated

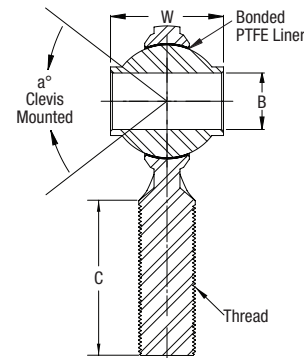
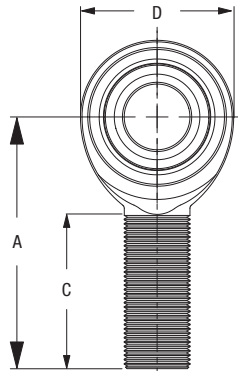
PART NUMBER

DIMENSIONS IN INCHES

PCYM-T Male

Right Hand	Left Hand	B + .0015 - .0005	W ± .005	A ± .015	D Ref.	C + .062 - .031	Thread UNF-3A	Misalign. Angle a°	Ult. Radial Static Load Lbs.	Approx. Brg. Wgt. Lbs.
PCYMR6T	PCYML6T	0.3750	0.875	2.125	1.125	1.375	3/8-24	55	11,050	0.14
PCYMR7T	PCYML7T	0.4375	1.000	2.438	1.312	1.500	7/16-20	58	14,449	0.22
PCYMR8T	PCYML8T	0.5000	1.250	2.625	1.500	1.625	1/2-20	65	16,240	0.33
PCYMR8-10T	PCYML8-10T	0.5000	1.250	2.875	1.750	1.750	5/8-18	65	24,158	0.44
PCYMR10T	PCYML10T	0.6250	1.375	2.875	1.750	1.750	5/8-18	64	21,219	0.51
PCYMR10-12T	PCYML10-12T	0.6250	1.375	3.375	2.000	2.000	3/4-16	64	30,290	0.68
PCYMR12T	PCYML12T	0.7500	1.500	3.375	2.000	2.000	3/4-16	61	29,127	0.79

SELF-LUBRICATING



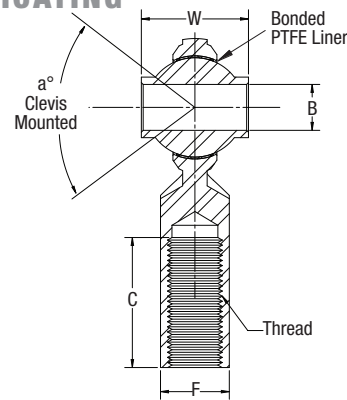
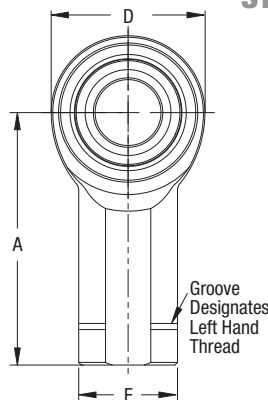
PART NUMBER

DIMENSIONS IN INCHES

PCYF-T Female

Right Hand	Left Hand	B + .0015 - .0005	W ± .005	A ± .015	D Ref.	C + .062 - .031	E ± .010	F + .002 - .010	Thread UNF-2B	Misalign. Angle a°	Ult. Radial Static Load Lbs.	Approx. Brg. Wgt. Lbs.
PCYFR6T	PCYFL6T	0.375	0.875	2.125	1.125	1.062	0.687	0.562	3/8-24	55	11,050	0.20
PCYFR8T	PCYFL8T	0.500	1.250	2.625	1.500	1.375	0.875	0.750	1/2-20	65	16,240	0.43
PCYFR10T	PCYFL10T	0.625	1.375	2.875	1.750	1.562	1.000	0.875	5/8-18	64	21,219	0.57
PCYFR12T	PCYFL12T	0.750	1.500	3.375	2.000	1.785	1.125	1.000	3/4-16	61	29,127	0.84

SELF-LUBRICATING



This series, unique to QA1, offers economical, high load, high misalignment rod end bearings. These bearings feature a self-lubricating PTFE liner, a high misalignment ball and a heat treated alloy steel body.