

### SLB Features

#### BALL

- 52100 Bearing Steel
- Heat Treated
- Hard Chrome Plated
- Precision Ground

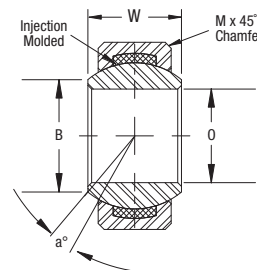
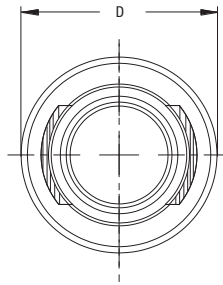
#### RACE

- Carbon Fiber Reinforced Nylon 12 with PTFE
- Stainless Steel
- Heat Treated

DIMENSIONS IN INCHES

### SLB

Part Number	B + .0015 - .0005	D + .0000 - .0007	T ± .005	W ± .005	O Flat Dia. Ref.	M Cham. Ref.	Ball Dia. Ref.	Misalign. Angle a°	Ult. Radial Static Load Lbs.	Ult. Axial Push-Out Load Lbs.	No Load Breakaway Torque In. Lbs.	Approx. Brg. Wgt. Lbs.
SLB8	0.5000	1.0000	0.390	0.500	0.640	0.032	0.781	9.5	4,662	2,960	10	0.06
SLB10	0.6250	1.1875	0.500	0.625	0.780	0.032	0.968	8.5	7,572	5,040	10	0.10
SLB12	0.7500	1.4375	0.593	0.750	0.920	0.044	1.187	9.0	11,451	6,160	10	0.19



### EMB & EMB Wide Ball Features

#### BALL

- 52100 Bearing Steel
- Heat Treated
- Hard Chrome Plated
- Precision Ground

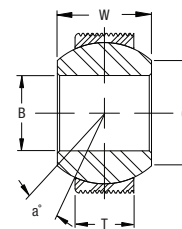
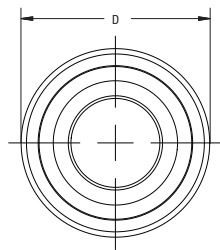
#### RACE

- Carbon Fiber Reinforced Nylon 12 with PTFE
- 0.006" - 0.008" Deep 60° V-Groove - 56 TPI

DIMENSIONS IN INCHES

### EMB

Part Number	B + .0025 - .0005	D ± .001	T ± .005	W ± .005	O Flat Dia. Ref.	Ball Dia. Ref.	Misalign. Angle a°	Ult. Radial Static Load Lbs.	Ult. Axial Push-out Load Lbs.	No Load Breakaway Torque In. Lbs.	Approx. Brg. Wgt. Lbs.
EMB8-101	0.500	1.06	0.390	0.625	0.698	0.937	17	2,000	500	10	0.06
EMB10-101	0.625	1.06	0.390	0.625	0.739	0.968	16	2,000	400	10	0.05
EMB10-102	0.690	1.06	0.390	0.560	0.790	0.968	12	2,000	400	10	0.04



DIMENSIONS IN INCHES

### EMB Wide Ball

Part Number	B + .0025 - .0005	D ± .001	T ± .005	W ± .005	O Flat Dia. Ref.	Ball Dia. Ref.	Misalign. Angle a°	Ult. Radial Static Load Lbs.	Ult. Axial Push-out Load Lbs.	No Load Breakaway Torque In. Lbs.	Approx. Brg. Wgt. Lbs.
EMB8-102	.500	0.995	0.390	1.000	0.600	0.781	10	2,000	500	10	0.04
EMB8-103	.505	1.054	0.390	1.375	0.698	0.937	20	2,000	500	10	0.10

