

GM-T & GF-T Stainless Steel

PTFE Lined - Right & Left Hand Threads - Male & Female

C O M M E R C I A L

**Inch
2-Piece
Rod Ends**

QA1

GM-T & GF-T

Features

BALL

- 440C Stainless Steel
- Heat Treated
- Hard Chrome Plated
- Precision Ground

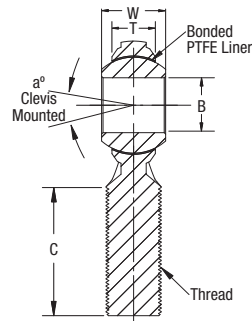
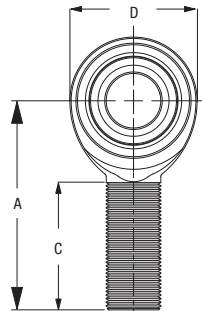
BODY

- 300 Series Stainless Steel
- PTFE Lined

PART NUMBER

DIMENSIONS IN INCHES

GM-T Male



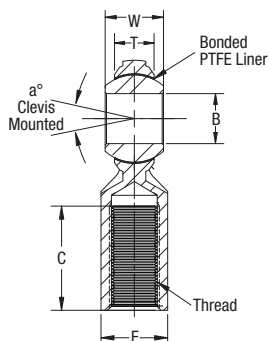
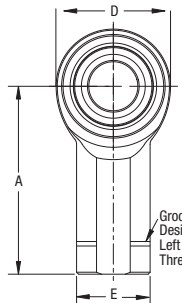
Right Hand	Left Hand	B + .0015 - .0005	W ± .005	T Ref.	A ± .015	D ± .010	Ball Dia. Ref.	C + .062 - .031	Thread UNF-3A	Misalign. Angle a°	Ult. Radial Static Load Lbs.	Approx. Brg. Wgt. Lbs.
GMR3T	GML3T	0.1900	0.312	0.234	1.250	0.625	0.437	0.750	10-32	20	1,190	0.03
GMR4T	GML4T	0.2500	0.375	0.250	1.562	0.750	0.500	1.000	1/4-28	27	2,165	0.04
GMR5T	GML5T	0.3125	0.437	0.312	1.875	0.875	0.625	1.250	5/16-24	22	3,278	0.07
GMR6T	GML6T	0.3750	0.500	0.359	1.938	1.000	0.719	1.250	3/8-24	22	4,527	0.11
GMR7T	GML7T	0.4375	0.562	0.406	2.125	1.125	0.812	1.375	7/16-20	21	5,689	0.15
GMR8T	GML8T	0.5000	0.625	0.453	2.438	1.312	0.937	1.500	1/2-20	20	7,352	0.24
GMR10T	GML10T	0.6250	0.750	0.484	2.625	1.500	1.125	1.625	5/8-18	26	8,200	0.36
GMR12T	GML12T	0.7500	0.875	0.593	2.875	1.750	1.312	1.750	3/4-16	24	11,595	0.57

SELF-LUBRICATING

PART NUMBER

DIMENSIONS IN INCHES

GF-T Female



Right Hand	Left Hand	B + .0015 - .0005	W ± .005	T Ref.	A ± .015	D ± .010	E ± .010	F ± .010	Ball Dia. Ref.	C + .062 - .031	Thread UNF-2B	Misalign. Angle a°	Ult. Radial Static Load Lbs.	Approx. Brg. Wgt. Lbs.
GFR3T	GFL3T	0.1900	0.312	0.234	1.062	0.625	0.406	0.312	0.437	0.500	10-32	20	1,190	0.04
GFR4T	GFL4T	0.2500	0.375	0.250	1.312	0.750	0.469	0.375	0.500	0.687	1/4-28	27	2,165	0.05
GFR5T	GFL5T	0.3125	0.437	0.312	1.375	0.875	0.500	0.437	0.625	0.687	5/16-24	22	3,278	0.08
GFR6T	GFL6T	0.3750	0.500	0.359	1.625	1.000	0.687	0.562	0.719	0.812	3/8-24	22	4,527	0.13
GFR7T	GFL7T	0.4375	0.562	0.406	1.812	1.125	0.750	0.625	0.812	0.937	7/16-20	21	5,689	0.18
GFR8T	GFL8T	0.5000	0.625	0.453	2.125	1.312	0.875	0.750	0.937	1.062	1/2-20	20	7,352	0.29
GFR10T	GFL10T	0.6250	0.750	0.484	2.500	1.500	1.000	0.875	1.125	1.375	5/8-18	26	8,200	0.43
GFR12T	GFL12T	0.7500	0.875	0.593	2.875	1.750	1.125	1.000	1.312	1.562	3/4-16	24	11,595	0.65

SELF-LUBRICATING

This series features a self-lubricating PTFE liner and a 300 series stainless steel body for corrosive environments.

MGM-T & MGF-T Stainless Steel

PTFE Lined - Right & Left Hand Threads - Male & Female

C O M M E R C I A L

**Metric
2-Piece
Rod Ends**

QA1

MGM-T & MGF-T Features

BALL

- 440C Stainless Steel
- Heat Treated
- Hard Chrome Plated
- Precision Ground

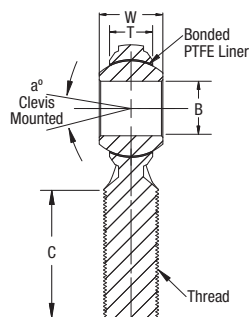
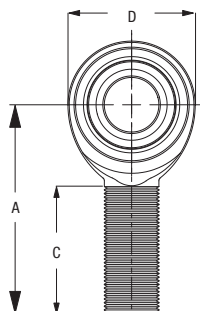
BODY

- 300 Series Stainless Steel
- PTFE Lined

PART NUMBER

DIMENSIONS IN MILLIMETERS

MGM-T Male



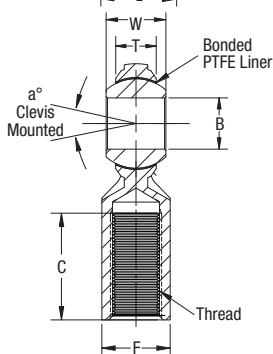
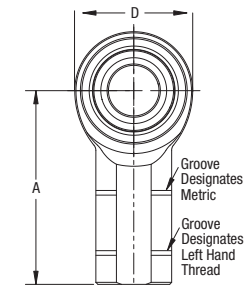
Right Hand	Left Hand	B + .065 - .012	W ± .12	T Ref.	A ± .40	D ± .38	Ball Dia. Ref.	C ± 1.0	Thread 6g	Misalign. Angle a°	Ult. Radial Static Load (Newtons)	Approx. Brg. Wgt. (Grams)
MGMR5T	MGML5T	5	8	5.75	33	16.00	11.10	20	M5X.08	22	4,056	12
MGMR6T	MGML6T	6	9	6.25	36	19.00	12.70	22	M6X1.0	23	6,093	18
MGMR8T	MGML8T	8	12	8.00	42	22.25	15.88	25	M8X1.25	28	9,118	31
MGMR10T	MGML10T	10	14	9.50	48	27.00	19.05	29	M10X1.5	26	14,144	68
MGMR12T	MGML12T	12	16	10.75	54	30.00	22.23	33	M12X1.75	27	17,373	78
MGMR14T	MGML14T	14	19	12.25	60	34.75	25.40	36	M14X2.0	30	23,699	118
MGMR16T	MGML16T	16	21	12.75	66	38.00	28.58	40	M16X2.0	33	25,162	173

SELF-LUBRICATING

PART NUMBER

DIMENSIONS IN MILLIMETERS

MGF-T Female



Right Hand	Left Hand	B + .065 - .012	W ± .12	T Ref.	A ± .40	D ± .38	E ± .25	F ± .25	Ball Dia. Ref.	C ± 1.0	Thread 6H	Misalign. Angle a°	Ult. Radial Static Load (Newtons)	Approx. Brg. Wgt. (Grams)
MGFR5T	MGFL5T	5	8	5.75	27	16.00	11	9	11.10	14	M5X.08	22	4,136	18
MGFR6T	MGFL6T	6	9	6.25	30	19.00	13	11	12.70	14	M6X1.0	23	6,138	25
MGFR8T	MGFL8T	8	12	8.00	36	22.25	16	14	15.88	17	M8X1.25	28	9,340	40
MGFR10T	MGFL10T	10	14	9.50	43	27.00	19	17	19.05	21	M10X1.5	26	15,310	80
MGFR12T	MGFL12T	12	16	10.75	50	30.00	22	19	22.23	24	M12X1.75	27	17,373	95
MGFR14T	MGFL14T	14	19	12.25	57	34.75	25	22	25.40	27	M14X2.0	30	23,699	160
MGFR16T	MGFL16T	16	21	12.75	64	38.00	27	22	28.58	33	M16X2.0	33	25,162	215

SELF-LUBRICATING

This series features a self-lubricating PTFE liner and a 300 series stainless steel body for corrosive environments.