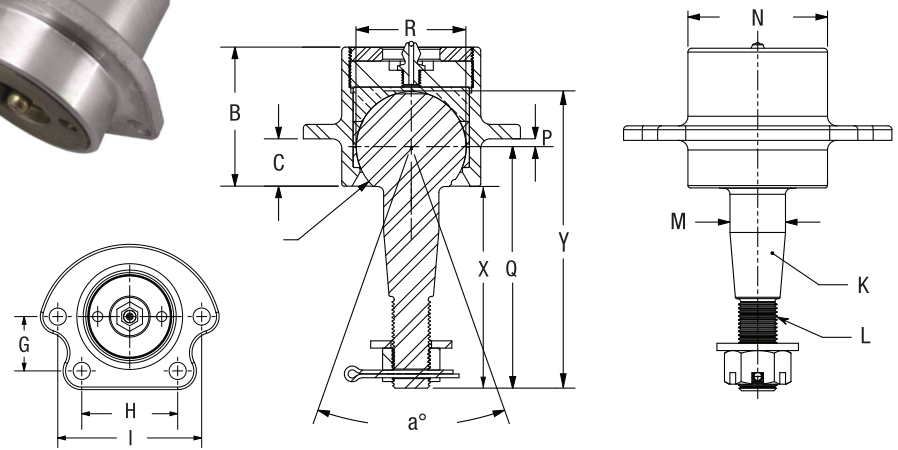


BOLT-IN STYLE



Part Number	Some Popular Applications	Location	Interchange		
			Moog®	Afco®	Howe®
1210-101	Fits Upper Taper of Pinto Spindles, 63-70 C10	Upper GM	K6024	20031LF	22300
1210-200B					
1210-201B					
1210-238B					
1210-103	73-87 Chevy Pickup, GMC Trucks, Modified, Street Stocks	Upper GM	K6136	20032-1LF	22301
1210-202B					
1210-203B					
1210-104					
1210-204B	71-96 Impala, 70-81 Camaro/Firebird, 73-83 Chevelle/Malibu, 73-88 Monte Carlo, 73-81 Lemans, 75-79 Nova/Chevy II, S-10 Trucks	Upper GM	K5208	20032LF	22302
1210-205B					
1210-285B					
1210-113					
1210-298B	67-69 Camaro/Firebird, 64-72 Chevelle/Malibu, 70-72 Monte Carlo, 68-74 Nova/Chevy II, 64-72 GTO	Upper GM	K5108	-	22303
1210-299B					
1210-299B					



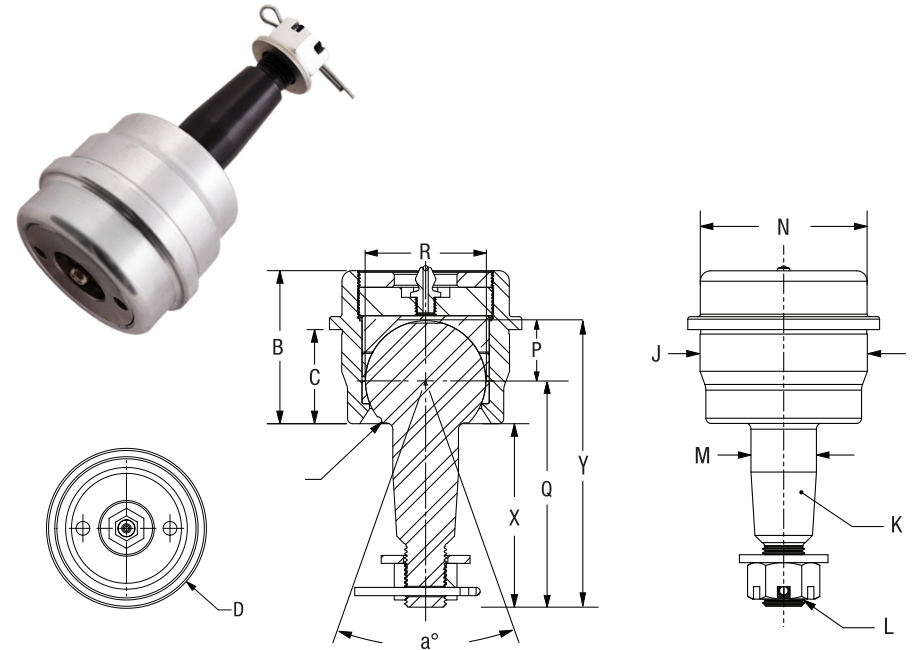
Part Number	Housing Only Part Number	Stud Only Part Number	Length Difference	Stud Length (X)	Stud Length (Y)	Misalign. Angle (a°)	Under Shoulder Length (C)	Housing Depth (B)	Bolt Pattern Y Dim (G)	Bolt Pattern X1 Dim (H)	Bolt Pattern X2 Dim (I)	Stud Taper (K)	Stud Thread (L)	Taper Major Dia. (M)	Housing OD (N)	Bal Center from Mounting Flange (P)	Ball Center to End of Stud (Q)	Ball Diameter (R)
1210-101	1210-501	9029-220	Standard	2.330	3.542	65	0.619	1.819	1.062	1.875	2.813	1.5:12	1/2-20	0.724	1.818	0.098	2.851	1.438
1210-200B	1210-501	9029-200	+0.1	2.430	3.642	65	0.619	1.819	1.062	1.875	2.813	1.5:12	1/2-20	0.724	1.818	0.098	2.951	1.438
1210-201B	1210-501	9029-201	+0.5	2.830	4.042	65	0.619	1.819	1.062	1.875	2.813	1.5:12	1/2-20	0.724	1.818	0.098	3.351	1.438
1210-238B	1210-501	9029-128	+1.0	3.330	4.542	65	0.619	1.819	1.062	1.875	2.813	1.5:12	1/2-20	0.724	1.818	0.098	3.851	1.438
1210-103	1210-503	9029-221	Standard	2.641	3.850	65	0.619	1.819	1.062	1.875	2.813	2:12	1/2-20	0.723	1.818	0.100	3.16	1.438
1210-202B	1210-503	9029-202	+0.1	2.741	3.950	65	0.619	1.819	1.062	1.875	2.813	2:12	1/2-20	0.723	1.818	0.100	3.26	1.438
1210-203B	1210-503	9029-203	+0.5	3.141	4.350	65	0.619	1.819	1.062	1.875	2.813	2:12	1/2-20	0.723	1.818	0.100	3.66	1.438
1210-104	1210-504	9029-222	Standard	2.380	3.593	73	1.110	1.820	0.911	1.750	2.500	2:12	1/2-20	0.635	1.816	0.588	2.902	1.438
1210-204B	1210-504	9029-204	+0.1	2.480	3.693	73	1.110	1.820	0.911	1.750	2.500	2:12	1/2-20	0.635	1.816	0.588	3.002	1.438
1210-205B	1210-504	9029-205	+0.5	2.880	4.093	73	1.110	1.820	0.911	1.750	2.500	2:12	1/2-20	0.635	1.816	0.588	3.402	1.438
1210-285B	1210-504	9029-285	+1.0	3.380	4.593	73	1.110	1.820	0.911	1.750	2.500	2:12	1/2-20	0.635	1.816	0.588	3.902	1.438
1210-113	1210-513	9029-119	Standard	2.270	3.486	73	1.110	1.820	0.807	1.770	2.402	1.5:12	1/2-20	0.635	1.816	0.585	2.795	1.438
1210-298B	1210-513	9029-298	+0.5	2.770	3.986	73	1.110	1.820	0.807	1.770	2.402	1.5:12	1/2-20	0.635	1.816	0.585	3.295	1.438
1210-299B	1210-513	9029-299	+1.0	3.270	4.486	73	1.110	1.820	0.807	1.770	2.402	1.5:12	1/2-20	0.635	1.816	0.585	3.795	1.438

DIMENSIONS IN INCHES



PRESS-IN STYLE

Part Numbers	Some Popular Applications	Location	Interchange		
			Moog®	Afco®	Howe®
1210-108 1210-218P 1210-219P	71-87 C10, Impala Spindle, Impala Type Modifieds, Street Stocks	Lower GM	K6117T	20038-1LF	22419
1210-109 1210-208P 1210-209P	70-02 Camaro/Firebird, 73-88 Chevelle/Malibu, 77-96 Impala, 73-88 Monte Carlo, 75-79 Nova/Chevy II, S10, Mini Stocks	Lower GM	K6145T	20039LF	22420
1210-110 1210-210P 1210-211P	67-69 Camaro/Firebird, 64-72 Chevelle/Malibu, 70-72 Monte Carlo, 68-74 Nova/Chevy II, 64-72 GTO, LeMans, Most Popular Modifieds	Lower GM	K5103	20033LF	22421
1210-112 1210-214P 1210-215P	71-76 Impala, All Howe, Rayburn, GRT, Warrior, Port City, Popular Late Model, Most Wide Type Dirt Cars	Lower GM	K6141	-	22413
1210-115 1210-297P	79-93 Mustang	Lower Ford	K8259	-	22426
1210-114 1210-296P	94-04 Mustang	Lower Ford	K8749	-	22400



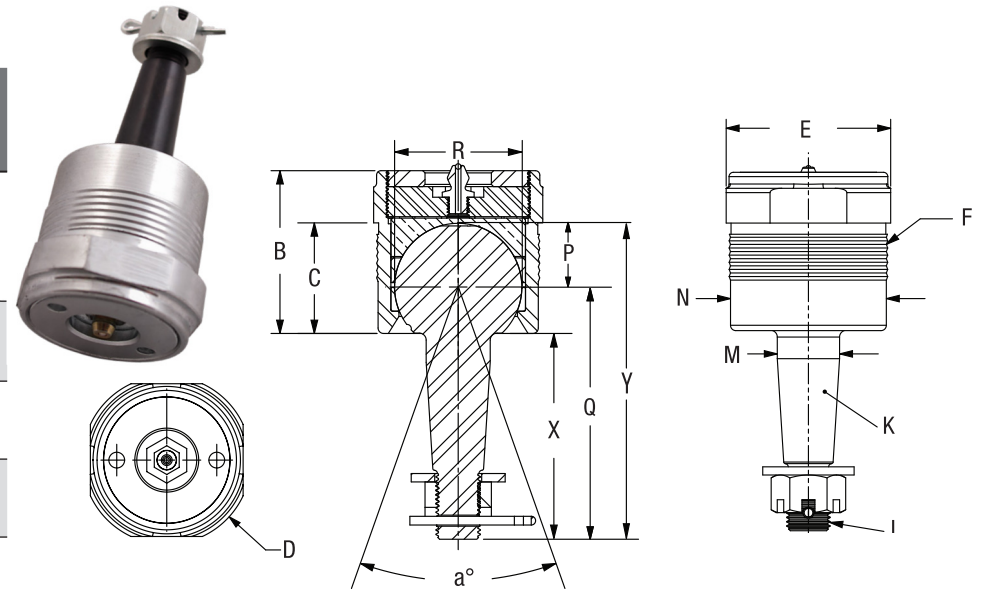
Part Number	Housing Only Part Number	Stud Only Part Number	Length Difference	Stud Length (X)	Stud Length (Y)	Misalign. Angle (a°)	Under Shoulder Length (C)	Housing Depth (B)	Shoulder OD (D)	Press-in Major Dia. (J)	Stud Taper (K)	Stud Thread (L)	Taper Major Dia. (M)	Housing OD (N)	Ball Center from Mounting Flange (P)	Ball Center to End of Stud (Q)	Ball Diameter (R)
1210-108	1210-508	9029-226	Standard	3.230	4.625	44	1.060	2.000	2.250	1.976	2:12	5/8-18	0.872	2.000	0.639	3.651	1.625
1210-218P	1210-508	9029-218	+0.1"	3.330	4.725	44	1.060	2.000	2.250	1.976	2:12	5/8-18	0.872	2.000	0.639	3.751	1.625
1210-219P	1210-508	9029-219	+0.5"	3.730	5.125	44	1.060	2.000	2.250	1.976	2:12	5/8-18	0.872	2.000	0.639	4.151	1.625
1210-109	1210-509	9029-227	Standard	2.440	3.641	64	1.060	1.830	2.250	2.092	2:12	1/2-20	0.784	2.000	0.549	2.951	1.438
1210-208P	1210-509	9029-208	+0.1"	2.540	3.741	64	1.060	1.830	2.250	2.092	2:12	1/2-20	0.784	2.000	0.549	3.051	1.438
1210-209P	1210-509	9029-209	+0.5"	2.940	4.141	64	1.060	1.830	2.250	2.092	2:12	1/2-20	0.784	2.000	0.549	3.451	1.438
1210-110	1210-510	9029-228	Standard	2.190	3.396	64	1.125	1.830	2.300	2.008	1.5:12	1/2-20	0.785	2.000	0.610	2.705	1.438
1210-210P	1210-510	9029-210	+0.1"	2.290	3.496	64	1.125	1.830	2.300	2.008	1.5:12	1/2-20	0.785	2.000	0.610	2.805	1.438
1210-211P	1210-510	9029-211	+0.5"	2.690	3.896	64	1.125	1.830	2.300	2.008	1.5:12	1/2-20	0.785	2.000	0.610	3.205	1.438
1210-112	1210-512	9029-223	Standard	2.410	3.848	42	1.130	2.047	2.375	2.185	2:12	5/8-18	0.830	1.811	0.480	3.06	1.625
1210-214P	1210-512	9029-214	+0.1"	2.510	3.948	42	1.130	2.047	2.375	2.185	2:12	5/8-18	0.830	1.811	0.480	3.16	1.625
1210-215P	1210-512	9029-215	+0.5"	2.910	4.348	42	1.130	2.047	2.375	2.185	2:12	5/8-18	0.830	1.811	0.480	3.56	1.625
1210-115	1210-515	9029-295	Standard	2.770	4.248	50	1.080	2.080	2.250	1.942	1.5:12	5/8-18	0.821	2.000	0.390	3.46	1.625
1210-297P	1210-515	9029-297	+0.5"	2.77	4.748	50	1.080	2.080	2.250	1.942	1.5:12	5/8-18	0.821	2.000	0.390	3.96	1.625
1210-114	1210-514	9029-294	Standard	2.4	3.876	46	1.080	2.080	2.250	1.942	1.5:12	5/8-18	0.852	2.000	0.390	3.09	1.625
1210-296P	1210-514	9029-296	+0.5"	2.4	4.376	46	1.08	2.080	2.250	1.942	1.5:12	5/8-18	0.852	2.000	0.390	3.59	1.625

DIMENSIONS IN INCHES



SCREW-IN STYLE

† umber	Some Popular Applications	Location	Interchange		
			Moog®	Afco®	Howe®
1210-105	Fits Upper & Lower Tapers In Pinto Spindle, Small Chrysler, 62-78 Chrysler B-Body, 70-74 Chrysler E-Body, 73-76 Chrysler A-Body	Upper Mopar	K772	20034LF	22320
1210-300S					
1210-200S					
1210-201S					
1210-238S	71-76 Impala, Popular Late Models, Most Wide Type Cars	Lower GM	K6141T	20038LF	22410
1210-102					
1210-214S					
1210-215S	60-66 Imperial, Nearly All Strut Cars, Large Chrysler	Lower Mopar	K727 MP1003	20036LF	22412
1210-106					
1210-216S					
1210-217S					
1210-107	73-78 Charger, 73-74 GTX, 68-73 Road Runner, 79-80 Duster, Most Modifieds & Most Wide Type Cars	Lower Mopar	K719	20035	22418
1210-206S					
1210-207S					
1210-111	NASCAR, Willwood, Mustang II	Upper NASCAR	MP1002	-	-
1210-212S					
1210-213S					



Part Number	Housing Only Part Number	Stud Only Part Number	Length Difference	Stud Length (X)	Stud Length (Y)	Misalign. Angle (a°)	Under Shoulder Length (C)	Housing Depth (B)	Shoulder OD (D)	Wrench Flat (E)	Thread Major Dia. (F)	Stud Taper (K)	Stud Thread (L)	Taper Major Dia. (M)	Housing OD (N)	Ball Center from Mounting Flange (P)	Ball Center to End of Stud (Q)	Ball Diameter (R)
1210-105	1210-505	9029-220	Standard	2.33	3.542	64	1.25	1.840	2.110	1.912	1.837	1.5:12	1/2-20	0.724	1.810	0.727	2.851	1.438
1210-300S	1210-505	9029-300	-0.3"	2.17	3.382	70	1.25	1.840	2.110	1.912	1.837	1.5:12	9/16-18	0.710	1.810	0.727	2.691	1.438
1210-200S	1210-505	9029-200	+0.1"	2.43	3.642	64	1.25	1.840	2.110	1.912	1.837	1.5:12	1/2-20	0.724	1.810	0.727	2.951	1.438
1210-201S	1210-505	9029-201	+0.5"	2.83	4.042	64	1.25	1.840	2.110	1.912	1.837	1.5:12	1/2-20	0.724	1.810	0.727	3.351	1.438
1210-238S	1210-505	9029-238	+1.0"	3.33	4.542	64	1.25	1.840	2.110	1.912	1.837	1.5:12	1/2-20	0.724	1.810	0.727	3.851	1.438
1210-102	1210-502	9029-223	Standard	2.41	3.848	42	1.39	2.047	2.308	1.953	2.012	2:12	5/8-18	0.830	1.953	0.744	3.06	1.625
1210-214S	1210-502	9029-214	+0.1"	2.51	3.948	42	1.39	2.047	2.308	1.953	2.012	2:12	5/8-18	0.830	1.953	0.744	3.16	1.625
1210-215S	1210-502	9029-215	+0.5"	2.91	4.348	42	1.39	2.047	2.308	1.953	2.012	2:12	5/8-18	0.830	1.953	0.744	3.56	1.625
1210-106	1210-506	9029-224	Standard	2.71	4.143	40	1.39	2.047	2.308	1.953	2.012	1.5:12	5/8-18	0.892	1.953	0.744	3.356	1.625
1210-216S	1210-506	9029-216	+0.1"	2.81	4.243	40	1.39	2.047	2.308	1.953	2.012	1.5:12	5/8-18	0.892	1.953	0.744	3.456	1.625
1210-217S	1210-506	9029-217	+0.5"	3.21	4.643	40	1.39	2.047	2.308	1.953	2.012	1.5:12	5/8-18	0.892	1.953	0.744	3.856	1.625
1210-107	1210-507	9029-225	Standard	2.66	3.871	64	1.25	1.840	2.110	1.912	1.837	1.5:12	5/8-18	0.780	1.810	0.727	3.181	1.438
1210-206S	1210-507	9029-206	+0.1"	2.76	3.971	64	1.25	1.840	2.110	1.912	1.837	1.5:12	5/8-18	0.780	1.810	0.727	3.281	1.438
1210-207S	1210-507	9029-207	+0.5"	3.16	4.371	64	1.25	1.840	2.110	1.912	1.837	1.5:12	5/8-18	0.780	1.810	0.727	3.681	1.438
1210-111	1210-511	9029-229	Standard	2.59	3.803	68	1.25	1.840	2.110	1.912	1.837	1.5:12	9/16-18	0.711	1.810	0.727	3.112	1.438
1210-212S	1210-511	9029-212	+0.1"	2.69	3.903	68	1.25	1.840	2.110	1.912	1.837	1.5:12	9/16-18	0.711	1.810	0.727	3.212	1.438
1210-213S	1210-511	9029-213	+0.5"	3.09	4.303	68	1.25	1.840	2.110	1.912	1.837	1.5:12	9/16-18	0.711	1.810	0.727	3.612	1.438

DIMENSIONS IN INCHES

